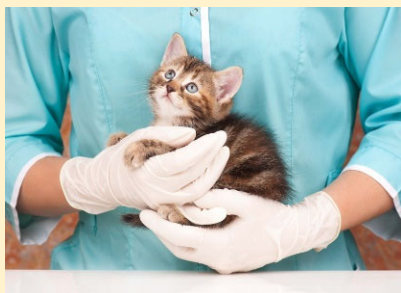


# PROVETLOGIC FOR THE CATTERY



Over the last few years, and especially during the pandemic, more and more people adapted cats and especially those who moved from the office to the home for work. This was especially true in larger cities. As people began to go back to the office animal shelters across the country started to see a dramatic increase in their cat population. Even today, sheltered cats can outnumber dogs by up to 3-to-1.

**ProVetLogic** is proud to be a leader in the research and development of products and protocols that are designed specifically for the care of cats in the home, shelter and zoo environments.

## Starting with the Basics:

**Selecting an effective cleaner disinfectant:** Not all cleaner disinfectants have been tested and/or proven effective against feline specific infectious agents. The product must be E.P.A. Registered and list the approved infectious agent kill claims on the label or provide direction as to where to find the complete list of claims. It is extremely important that the disinfectant has been tested and proven effective against **Feline Panleukopenia, Feline Calicivirus, and Ringworm**. These are three most prevalent feline disease impacting shelter cats.

**Avoiding Upper Respiratory Illness (URI) and Distress:** Certain ingredients can cause upper respiratory infections in cats and kittens and should be avoided including peroxide, chlorine, acids and other cleaners with extremely high or low pH values.







**Fragrance:** What smells good to you and me, may in fact be very offensive to a cat's olfactory sense or ability to smell. Select a cleaner with a mild fragrance that dissipates quickly.

**IMPORTANT: *What a cat can't smell a cat won't eat!***

### \*Animal Facility Disinfectant Cattery Efficacy

- Feline Calicivirus
- Feline Leukemia virus
- Feline Infectious Peritonitis
- Feline Panleukopenia virus
- Feline Picornavirus
- Feline Rhinotracheitis virus
- Rabies virus
- Ringworm

## Solutions & Supplies:

IMAGE	ITEM NO.	PACK	DESCRIPTION	BENEFITS
	V01-32MN	6/32-Ounce	Animal Facility Disinfectant AcuPro-Precision Pour Bottle	<ol style="list-style-type: none"> <li>1. Accurately squeeze, dilute and pour bottle</li> <li>2. Feline specific efficacy (*see above)</li> <li>3. Pleasant smelling</li> <li>4. No strong vapors</li> </ol>
	PVL115-102	Each or 6 Pack	Refillable Wiping System Canister w/160 Sheet Towel Roll	<ol style="list-style-type: none"> <li>1. Refillable and reusable</li> <li>2. Spring loaded lid keeps towels moist</li> </ol>
	PVL-10017R-6	6/160 Sheet Towel Rolls	Refillable Wiping System 160 Sheet Towel Roll	<ol style="list-style-type: none"> <li>1. 160 Sheets Per Roll (960 per case)</li> <li>2. Durable, lint free fiber</li> </ol>
	PVL-SS20012	Each	Refillable Wiping System Locking Canister Bracket	<ol style="list-style-type: none"> <li>1. Attaches to most hard surfaces</li> <li>2. Securely and safely locks the canister into place</li> </ol>
	PVL-MC32	Each or 10 Pack	32-Ounce Measuring Cup	<ol style="list-style-type: none"> <li>1. Add 1-ounce of Animal Facility Disinfectant per 32-ounces of water.</li> </ol>
	PVL-CK-1	Kit	Animal Facility Disinfectant Cattery Cleanup Kit	<p>Each Kit Includes:</p> <ul style="list-style-type: none"> <li>• 1 ea. 32-oz. Animal Facility AcuPro</li> <li>• 1 ea. Refillable Canister</li> <li>• 2 ea. 160 Sheet Towel Roll</li> <li>• 1 ea. 32-oz Measuring Cup</li> </ul>

# THE CATTERY PROTOCOL

## Preparing and Using the Refillable Canister:



Put on protective gloves



Remove canister lid



Pull up the first towel from center of the roll



Remove cap from AcuPro bottle



Add 1-ounce of product to measure cup



Fill with water to the 32-ounce line



Pour solution over the towel roll



Replace canister lid

## Surface Cleaning & Disinfecting Protocol:



**1** Remove cats from the cage and place in adjacent cage or kennel.



**2** Remove dishes, toys, bedding and litter box.



**3** Starting from the back of the cage and working towards the front, wipe the surface in one motion.



**4** Wipe down all touch points including cage handles, cage wire, dish holders, etc..



**5** For heavily soiled surfaces, hard to reach areas and wheels wipe with a moist towel wipe and agitate with a synthetic brush. Use a second wipe to remove any remaining residue.



**6** Discard used litter and clean box with a fresh towel wipe. Allow the surfaces to air dry before returning the cat to the cage.

## Floor Cleaning & Disinfecting Protocol:



1. In a mop bucket, mix 1-ounce of Animal Facility Disinfectant per gallon of water.
2. Using a clean mop head, start from the back of the room and work the cleaning process to the exit door.
3. Allow the floor to air dry.
4. Thoroughly rinse the mop head and hang to air dry.

### SAFETY:

1. Always wear protective gloves when using cleaning chemicals.
2. Always wear protective goggles when applying cleaning solutions above eye level.
3. Use Wet Floor Safety Signs to avoid dangerous slip and falls.
4. Wash hands thoroughly after completing the cleaning process.